



"Your Solutions Partner"

# Specifications

F.O.B. Sedalia, Missouri 65301



304

### OPTIONS:

- Safety pilots
- Stainless steel liner - **FMOD-SS-LINER**
- Stainless steel feet - **SS-FEET**
- Adapter plates - **31, 32, 33**
- Insets/Inset Covers - **521, 522, 523**
- Telescope cover - **546, 548**
- Spillage pans - **576, 676**
- Stainless steel cutting board in lieu of poly
- Hardwood cutting board in lieu of poly
- Drop type brackets for cutting board
- Standard serving shelf - **656-x**
- Deluxe serving shelf - **956-x**
- Standard buffet shelf - **63x**
- Deluxe buffet shelf - **83x**
- 3-bar tray slide - **3BTS-x**
- Stainless steel dish shelf under cutting board - **441S-x**

### AGENCY LISTINGS:



**DUKE MANUFACTURING CO.**  
2305 N. Broadway  
St. Louis, MO 63102

800.735.3853 Toll Free  
314.231.1130 In Missouri  
314.231.5074 Fax  
www.dukemfg.com

### Approval Stamp(s):

### PROJECT INFORMATION:

PROJECT: \_\_\_\_\_  
 ITEM: \_\_\_\_\_  
 QUANTITY: \_\_\_\_\_

### MODEL:

## AeroHot Steamtables Hot Food Units - Gas

- 302** 2 openings
- 303** 3 openings
- 304** 4 openings
- 305** 5 openings

### TOP:

- 20 gauge, 300 Series stainless steel
- Die-stamped openings - 12-1/16" x 20-1/16"
- Poly carving board - 7"W x 1/2" thick with 18 ga. stainless steel support base and die-stamped brackets

### HEAT COMPARTMENTS:

- Die-formed galvanized steel - 8" deep
- Insulated on all four sides and bottom with fiberglass

### BODY, UNDERSHELF AND LEGS:

- 20 gauge, 430 Series stainless steel body
- 18 gauge, 430 Series stainless steel undershelf
- 430 Series stainless steel tubular legs with adjustable plastic feet

### CONTROLS:

- Natural or Propane, as specified
- Galvanized steel radiation plate in each compartment
- Gas pressure regulator furnished in each unit
- Burners controlled by adjustable valve

### SHORT FORM SPECIFICATIONS:

**Duke AeroHot Steamtables - Hot Food Units - Gas.** Top shall be heavy gauge, 300 Series stainless steel, with body, undershelf and legs formed of heavy gauge, 430 Series stainless steel. Top shall have die-stamped openings measuring 12-1/16" x 20-1/16". Units to be furnished with polycarbonate carving board measuring 7" x 1/2" thick with 18 gauge stainless steel support base and die-stamped brackets. Die-formed heat compartments, 8" galvanized liner, each insulated on all four (4) sides and bottom with 1" thick fiberglass or equal, with thermal conductivity of 0.27 or less. Each compartment shall have individual burner rated at 3500 BTU for natural or propane. Burners controlled by adjustable valve. Galvanized radiation plate in each compartment and gas pressure regulator to be furnished. Unit shipped semi-knocked down.

NOT AVAILABLE ON CASTERS. • SPECIFY NATURAL OR PROPANE

# Aerohot®

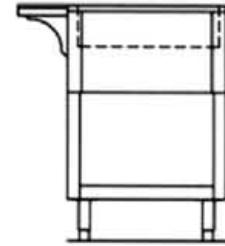
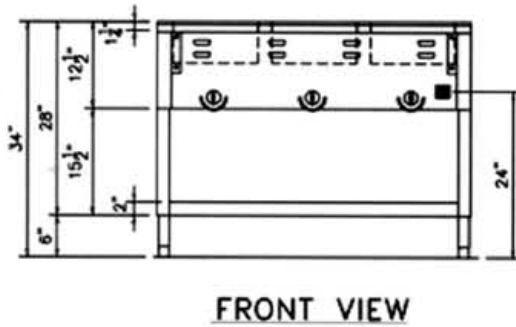
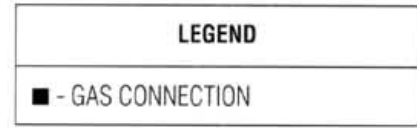
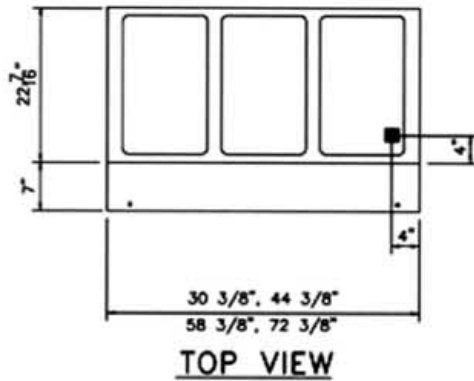
## AEROHOT STEAMTABLES HOT FOOD UNITS - GAS

- 302** 2 openings
- 303** 3 openings
- 304** 4 openings
- 305** 5 openings

A.I.A. File No. 35-C-13

Catalog No. AFS-GASHOT

AEROHOT STEAMTABLES - HOT FOOD UNITS - GAS



**DIMENSIONS:**

Freight Class: 85

Model	Length		Width		Height		Top Openings	Cube ft. crated	Weight	
	in.	cm	in.	cm	in.	cm			lbs.	kg
<b>302</b>	30-3/8	77.2	22-7/16	57.1	34	86.4	2	23.4	92	41.8
<b>303</b>	44-3/8	112.8	22-7/16	57.1	34	86.4	3	32.5	109	49.6
<b>304</b>	58-3/8	148.3	22-7/16	57.1	34	86.4	4	41.5	139	63.2
<b>305</b>	72-3/8	183.9	22-7/16	57.1	34	86.4	5	50.5	166	75.5

**POWER SUPPLY:** High altitude orifice available - specify elevation. SPECIFY NATURAL OR PROPANE.

Model	# Burners	Total BTU
<b>302</b>	2	7,000
<b>303</b>	3	10,500
<b>304</b>	4	14,000
<b>305</b>	5	17,500

NOTE: No combustible materials should be stored on bottom shelf. NOT AVAILABLE IN PORTABLE MODELS.



**DUKE MANUFACTURING CO.**  
2305 N. Broadway  
St. Louis, MO 63102

800.735.3853 Toll Free  
314.231.1130 In Missouri  
314.231.5074 Fax  
[www.dukemfg.com](http://www.dukemfg.com)

**"Your Solutions Partner"**